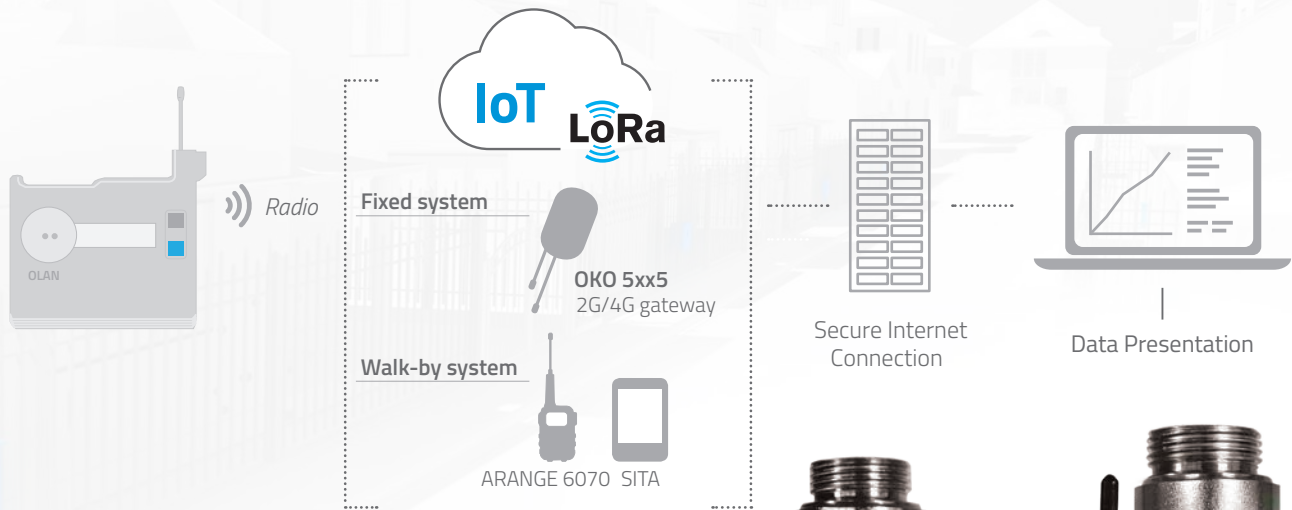




# Smart Gas Metering

## OLAN IOF5 Wireless IoT Gas Meter Data Logger with Valve Controller



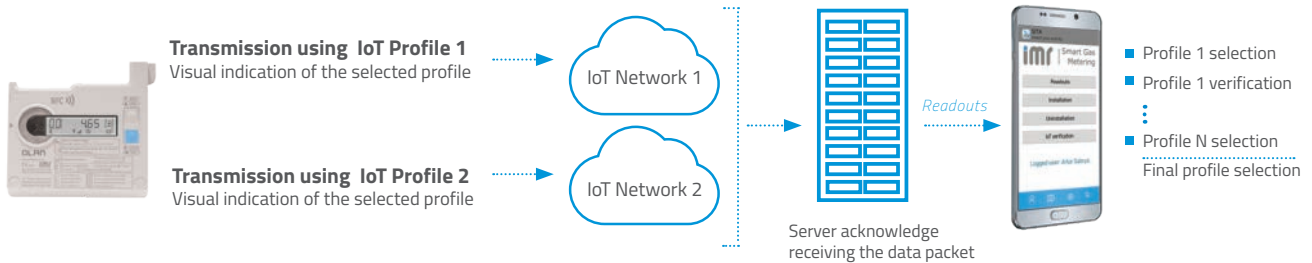
- IoT Connectivity / SRD wireless communication
- Double functionality: Credit & Prepaid
- Cut off valve, remote control
- Hourly consumption registered for 10 years
- Safe opening of the valve requiring consumer's confirmation and the procedure of leak detection
- Built-in pulse sensor
- Long life battery (10 years)
- ATEX Zone 2



**OLAN IOF5** is a data logger dedicated for Elster BK G4 gas meter equipped with internal valve. The device registers consumption profile as well as magnet and tamper detection. Once per day OLAN IOF5 send the data via **Lora** low power network. The data logger allows remote control of the valve which enables to facilitate the payment execution. It is designed for walk-by gas metering as well as fixed metering which makes it the most cost effective solution for individual housing, dense urban and block of flats.

**IMR Smart Gas Metering** system designed, developed and manufactured by AIUT consists of communication equipment, data loggers, sensors as well as backoffice software package for data acquisition, analytics and presentation.

Check communication and select appropriate IoT profile that assures stable OLAN reception.



**OLAN IOF5** is designed for fixed and walk-by readout and can also provide wireless communication autonomously with IoT (LPWAN) platforms. The data logger enables to control the valve remotely, without accessing the customer's premises: immediate valve closing and permission for manual opening. It also helps to reduce the costs of hard execution and promotes good payment behavior among consumers. In prepaid mode, OLAN IOF5 supports user to control the credit. While the credit runs out, the valve is automatically closed.

### Low Power Radio Communication

- Lora transmission: radio frame - every 24 h
- IMR IoT transmission: 868MHz radio frame - twice a day scheduled or on request
- Scope of data available with outgoing transmission:
  - Summary reports with hourly consumption profile
  - Events: credit run out, device removal, external magnet, cover open
  - On request: data archive, diagnostics
- Scope of functionality available over bidirectional transmission:
  - Remote valve control
  - Topping up, updating tariff parameters
  - Configuration
- Opto port and IMR IoT radio available for on-site set up, configuration and diagnostic

### Compliance

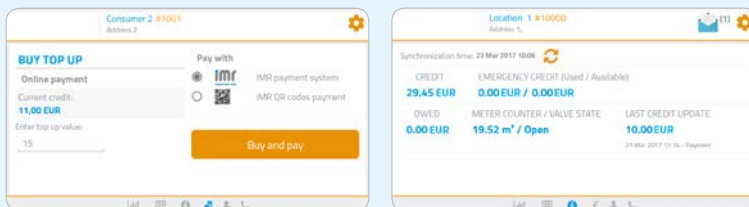
- ATEX Directive 2014/34/EU (Zone 2, gas group B)
- Radio Equipment Directive (RED) 2014/53/EU – CE marked equipment
- IECEx Certified Equipment Scheme

### Environmental Parameters

- Robust design, secured with seals
- Suitable for outdoor environment
- Operational temperature -40°C to +55°C
- IP67
- UV resistant

### Prepaid functionality managed from IMR Smart Gas app

- Easy access to your account and credit
- Historical credit, balance and consumption data
- List of transactions and their status
- Recommended top-up value and date, top-up payment

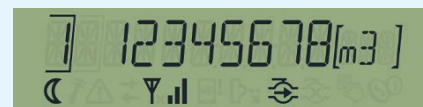


### Battery

- Lithium battery pack
- User replaceable
- 10 years lifetime

### HMI Interface

- LCD electronic index for verification with mechanical index
- Easy installation process



### IT Management system

- IMR HES - a high class application for readouts, configuration, and communication management. A flexible and customizable communication platform supporting devices using various communication protocols
- Browse current and historical data with SIMAX web application, get e-mail summary reports
- Manage installation process, supervise and maintain high system performance with SITA mobile application