

APULSE X3F5

Smart Data Logger



SRD wireless communication, IoT



Hourly consumption registered for 10 years



Easy to set up & retrofittable on existing meters



Magnetic sensor



ATEX / IECEx / UK Ex certified



Long life battery (up to 10 years)

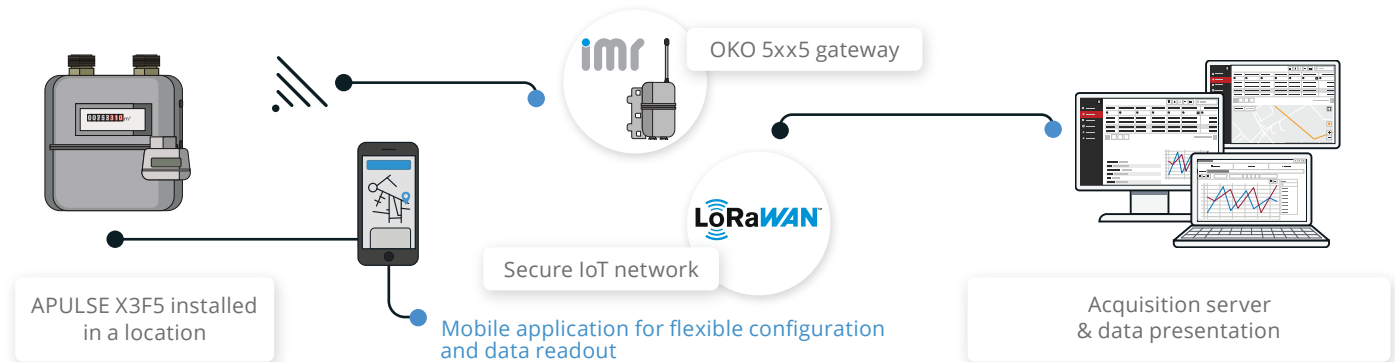
Take control of your energy consumption and gas bills with APULSE X3F5. This advanced smart data logger with a built-in pulse detector is compatible with all diaphragm gas meters. APULSE X3F5 securely transmits meter data via the LoRa network directly to the energy supplier, eliminating the need for manual readings. This ensures effortless operation, reduces maintenance efforts, and significantly enhances energy management efficiency.

APULSE X3F5 offers more than just remote meter readings. In addition to standard consumption data, it detects unauthorized meter access, including device removal, magnet tampering, and operational errors. Users can conveniently monitor and analyze data through web-based or mobile applications supported by the IoT Ecosystem—a high-performance software platform designed for seamless system integration, efficient commissioning, and simplified maintenance.

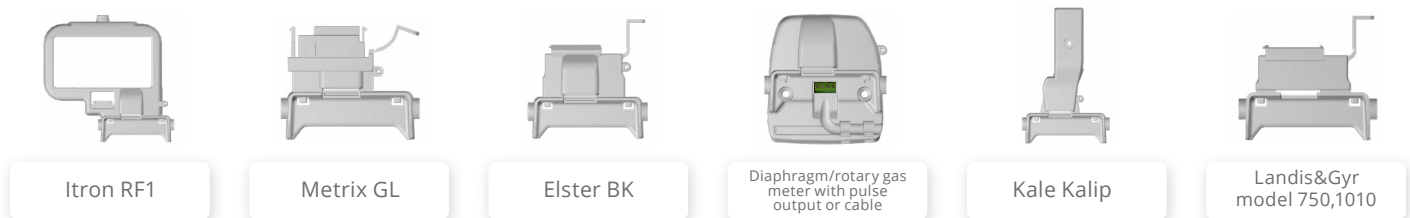
Installation is quick and intuitive, taking just a few minutes. Mount APULSE onto the gas meter using the designated adapter (see next page), secure it with screws and plastic seals. The process is guided by SITA, a user-friendly mobile app for easy readout and configuration.

PLUG & PLAY

APULSE X3F5 takes pulses from the meter and sends the data over the LoRa network to the acquisition server. If the device is out of range, OKO 5xx5 can be used as a mobile gateway. Subsequently, the data can be processed further to 3rd party data center. Our solution can operate both in fixed or walk-by mode, which ensures reliable and on-time readouts even in cases of disturbed IoT communication.



Thanks to the specially dedicated adapters, APULSE X3F5 can be used with different types of gas meters:



Low Power Radio Communication

- LoRa transmission: unlicensed 868 MHz band (EU868), hourly readouts, radio frame - once a day (by default)
- IMR IoT: 868MHz, 25mW, range: 1000m (open space), radio frame - twice a day (scheduled) or on request, walk-by frames - including 31 daily readouts by default
- IMR IoT bidirectional communication after transmission: data archive, diagnostics, configuration
- Event types: device removal, external magnet, max. hourly flow exceeded, max./min. temp. exceeded
- Opto port and IMR IoT radio available for on-site set up, configuration and diagnostic

Environmental Parameters

- ATEX / UK Ex / IECEx: Ex II 1G Ex ia IIB T3 Ga or Ex II 3G Ex ic IIB T3 Gc
- CE / UKCA
- Suitable for outdoor environment, IP65
- Operational temperature: -40°C to +55°C

HMI Interface

- LCD electronic index
- Magnetic or mechanical button

Power Supply

- User-replaceable battery
- Battery lifetime: up to 10 years*

*The battery life depends on the device's target configuration, environmental conditions, and user interaction with the device.

SITA Mobile App

- Convenient on-site operations: data synchronization, configuration, device installation
- Walk-by readings
- Current & archive consumption data

ORDER NUMBER

APULSE X3F5-21Mx
APULSE X3F5-31Mx
APULSE X3F5-23Mx
APULSE X3F5-33Mx

HARDWARE VERSION

built-in pulse sensor
built-in pulse sensor
connector
connector

BUTTON

magnetic
magnetic
magnetic
magnetic

BATTERY

single
double
single
double

Ex ZONE

zone 0
zone 0
zone 0
zone 0

